

ACL Graft Position Affects in Situ Graft Force Following ACL Reconstruction

Paulo H. Araujo, MD, Shigehiro Asai, MD, Mauricio Pinto, MD, Thiago Protta, MD, Kellie Middleton, MD, Monica Linde-Rosen, BSME, James Irrgang, PT, PhD, Patrick Smolinski, PhD, and Freddie H. Fu, MD

Investigation performed at the Department of Orthopaedic Surgery, University of Pittsburgh, Pittsburgh, Pennsylvania

Background: The purpose of our study was to evaluate the relationship between graft placement and in situ graft force after anterior cruciate ligament (ACL) reconstruction.

Methods: Magnetic resonance imaging (MRI) was obtained for twelve human cadaveric knees. The knees, in intact and deficient-ACL states, were subjected to external loading conditions as follows: an anterior tibial load of 89 N at 0°, 15°, 30°, 45°, 60°, and 90° of flexion and a combined rotatory (simulated pivot-shift) load of 5 Nm of internal tibial torque and 7 Nm of valgus torque at 0°, 15°, and 30° of flexion. Three ACL reconstructions were performed in a randomized order: from the center of the tibial insertion site to the center of the femoral insertion site (Mid), the center of the tibial insertion site to a more vertical femoral position (S1), and the center of the tibial insertion site to an even more vertical femoral position (S2). The reconstructions were tested following the same protocol used for the intact state, and graft in situ force was calculated for the two loadings at each flexion angle. MRI was used to measure the graft inclination angle after each ACL reconstruction.

Results: The mean inclination angle (and standard deviation) was $51.7^\circ \pm 5.0^\circ$ for the native ACL, $51.6^\circ \pm 4.1^\circ$ for the Mid reconstruction ($p = 0.85$), $58.7^\circ \pm 5.4^\circ$ for S1 ($p < 0.001$), and $64.7^\circ \pm 6.5^\circ$ for S2 ($p < 0.001$). At 0°, 15°, and 30° of knee flexion, the Mid reconstruction showed in situ graft force that was closer to that of the native ACL during both anterior tibial loading and simulated pivot-shift loading than was the case for S1 and S2 reconstructions. At greater flexion angles, S1 and S2 had in situ graft force that was closer to that of the native ACL than was the case for the Mid reconstruction.

Conclusions: Anatomic ACL reconstruction exposes grafts to higher loads at lower angles of knee flexion.

Clinical Relevance: Rehabilitation and return to sports progression may need to be modified to protect an anatomically placed graft after ACL reconstruction.

Peer Review: This article was reviewed by the Editor-in-Chief and one Deputy Editor, and it underwent blinded review by two or more outside experts. The Deputy Editor reviewed each revision of the article, and it underwent a final review by the Editor-in-Chief prior to publication. Final corrections and clarifications occurred during one or more exchanges between the author(s) and copyeditors.

Despite improved knee function compared with traditional transtibial surgery^{1,2}, the rate of graft failure following anatomic anterior cruciate ligament (ACL) reconstruction has been reported to be as high as 13%³, while the failure rate for transtibial ACL reconstruction has been reported to be approximately 7%^{4,5}. A recent study⁶ showed a cumulative revision rate at four years of 5.2% for the anteromedial (AM)

portal technique compared with 3.2% for the transtibial approach. The majority of graft failures following anatomic reconstruction occur six to nine months after surgery³, when it is common for patients to return to full sports participation, but when the graft is not fully mature⁷.

Of seventy-four studies that were reviewed relating to anatomic reconstruction, van Eck et al. found that only a few

Disclosure: One or more of the authors received payments or services, either directly or indirectly (i.e., via his or her institution), from a third party in support of an aspect of this work. In addition, one or more of the authors, or his or her institution, has had a financial relationship, in the thirty-six months prior to submission of this work, with an entity in the biomedical arena that could be perceived to influence or have the potential to influence what is written in this work. No author has had any other relationships, or has engaged in any other activities, that could be perceived to influence or have the potential to influence what is written in this work. The complete **Disclosures of Potential Conflicts of Interest** submitted by authors are always provided with the online version of the article.

TABLE 1 Anterior Tibial Translation (mm) During Anterior Loading by Knee Flexion Angle*

	0°	15°	30°	45°	60°	90°
Intact native ACL	4.8 ± 1.2	6.7 ± 0.10	7.2 ± 1.1	6.3 ± 1.1	5.3 ± 0.9	4.8 ± 1.0
ACL-deficient	10.3 ± 2.3†	15.8 ± 2.8†	16.0 ± 3.2†	13.3 ± 3.7†	10.8 ± 3.1†	6.8 ± 6.4
Mid reconstruction	3.8 ± 1.4‡	7.2 ± 1.3	7.1 ± 5.2	8.2 ± 1.2‡	7.3 ± 1.1‡	7.0 ± 1.5
S1 reconstruction	6.2 ± 1.3†	8.9 ± 2.1†	8.8 ± 2.0‡	7.6 ± 2.3	6.3 ± 2.3	5.0 ± 2.1
S2 reconstruction	7.6 ± 2.4†	10.8 ± 2.3†	10.3 ± 2.3†	8.1 ± 2.2‡	6.3 ± 2.1	3.5 ± 3.6

*The values are presented as the mean and the standard deviation. †Significantly different from intact native ACL at $p < 0.001$. ‡Significantly different from intact native ACL at $p < 0.01$.

reported objective methods that documented an anatomic position of the graft⁸. Illingworth et al. determined that the normal ACL is inclined from 43° to 57° degrees in sagittal-view magnetic resonance (MR) reconstructions, a view which serves to determine if the graft is positioned anatomically⁹.

Because anatomic placement may be associated with a higher rate of graft failure, we sought to determine if a more anatomic positioning of the graft (as indicated by a lower inclination angle) caused increased in situ force. Therefore, the purpose of this study was to determine the in situ force on the ACL graft and associated knee anterior translations after three different ACL reconstructions compared with that of the intact ACL. It was hypothesized that the in situ force in the graft would decrease with increasing graft inclination angle. It was also hypothesized that differences in graft in situ force may not be related to the anterior laxity of the knee. If increased in situ force is observed in an anatomically placed graft, then more conservative postoperative rehabilitation and slower return to sports progression may be required.

Materials and Methods

Prior approval was obtained for this study from the Committee for Oversight of Research and Clinical Training Involving Decedents. Twelve cadaveric knees were used (three from female donors and nine from nine male donors; mean age at death, 60.9 years [range, thirty-eight to seventy-nine years]). Prior to testing, magnetic resonance imaging (MRI) and computed tomography (CT) of the knees was performed to check for any abnormalities and to measure the native ACL inclination angle, according to the methods described by Illingworth et al.⁹. The knees were frozen at -20°C and thawed twenty-four hours prior to testing. The soft tissues beyond 15 cm proximal and distal to the knee joint were removed. The femur and the tibia were potted in cylindrical molds of an epoxy compound (Bondo; 3M) and mounted to aluminum cylinders. Specimens were kept moist with physiologic saline solution.

Robotic Testing System with Universal Force-Moment Sensor (UFS)

The joint was defined as being at full extension (0° of flexion) when a small extension moment, approximately 2 N at 15 cm from the joint line, was applied to the knee. Other kinematic degrees of freedom (anterior-posterior position, internal-external rotation, and varus-valgus rotation) were defined as zero in this configuration.

The femoral cylinder was attached to a fixed base, and the tibial cylinder was attached to the arm of the robotic testing system (Fig. 1). The testing system included a robot (CASPAR Stäubli RX90, Orto Maquet) with a UFS (Model

4015; JR3). The repeatability of motion was ± 0.02 mm at each joint for the robot, and the load cell had an accuracy ± 0.2 N and ± 0.1 Nm, according to the manufacturers. The system could control the displacement and the forces and moments applied to the knee in all six degrees of freedom¹⁰. Control and data acquisition were accomplished using a MATLAB program (MathWorks). Similar to that of a previous study¹¹, the origin of the tibial coordinate system was centered in the tibial plateau, with the proximal-distal axis parallel to the long axis of the tibia, with the medial-lateral axis connecting the medial and lateral tibial plateau prominences, and with the anterior-posterior axis being mutually perpendicular to these other two axes.

The six degrees-of-freedom path of passive flexion-extension of the intact knee was determined in 0.5° increments, from full extension to 90° of knee flexion¹¹, by minimizing forces and moments in the other degrees of freedom. The knees were tested intact, after ACL resection, and after each ACL reconstruction. To determine the anterior knee laxity over a range of flexion values, an anterior tibial load of 89 N (simulating a KT-1000 test)^{12,13} was applied to the specimens at 0°, 15°, 30°, 45°, 60°, and 90° degrees of knee flexion, as described by Oster et al.¹⁴. For the anterior knee laxity measurements, the flexion angle was kept fixed while the other degrees of freedom were allowed to vary so as to achieve a force of 89 N in the anterior direction and

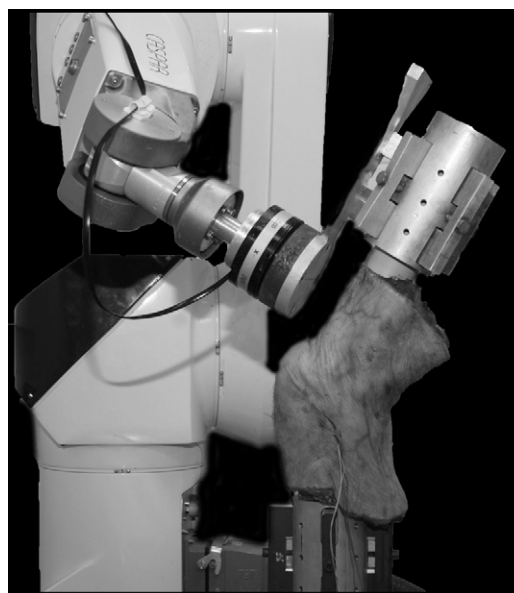


Fig. 1
The robotic system used in the study. The specimen was placed in an inverted position.

TABLE II Anterior Tibial Translation (mm) During Simulated Pivot-Shift Loading by Knee Flexion Angle*

	0°	15°	30°
Intact native ACL	2.4 ± 1.5	4.5 ± 2.9	5.7 ± 3.4
ACL-deficient	4.5 ± 2.8†	7.1 ± 3.9†	6.8 ± 4.0‡
Mid reconstruction	2.3 ± 1.5	4.5 ± 2.7	5.0 ± 2.9
S1 reconstruction	3.5 ± 2.2‡	6.3 ± 3.5§	6.3 ± 3.6
S2 reconstruction	3.9 ± 2.0†	6.8 ± 3.5†	6.9 ± 3.6†

*The values are presented as the mean and the standard deviation. †Significantly different from intact native ACL at $p < 0.01$. ‡Significantly different from intact native ACL at $p < 0.05$. §Significantly different from intact native ACL at $p < 0.001$.

minimize the other forces and moments. This mimicked an anterior drawer test at a fixed knee flexion angle, where an anterior load is applied and other degrees of freedom are unconstrained. No compressive loading was applied to the joint. Loads were applied at a slow rate, approximately 5 mm/min, a situation that can be considered quasi-static loading.

To assess rotational knee behavior, a simulated pivot-shift test was performed, whereby combined 5-Nm internal tibial and 7-Nm valgus torques were applied at fixed flexion angles of 0°, 15°, and 30°, with the other kinematic degrees of freedom again being unconstrained¹⁵⁻¹⁷.

ACL Reconstructions

Under arthroscopic visualization, using the three-portal technique¹⁸, the ACL was resected and its remnants preserved. Three femoral tunnels were created in the lateral wall of the intercondylar notch, using an outside-in drilling technique. A 7-mm drill bit was chosen to allow the drilling of the three tunnels with a 2-mm wall between each (as measured with an arthroscopic ruler prior to creating each subsequent tunnel). The first tunnel (Mid) was positioned in the center of the ACL insertion site, which was identified by the tissue remnants and the intercondylar and bifurcate ridges. The second tunnel (S1) was more vertical/superior and was drilled toward the "high AM" position. The third tunnel (S2) was even more vertical/superior. Note that the S1 and S2 femoral tunnels were not intentionally drilled to simulate the isometric position. Rather, those femoral tunnels were positioned so as to incrementally increase the graft inclination angle as measured on sagittal MRI. A single 7-mm tunnel was drilled in the center of the ACL tibial insertion site (Mid) (Fig. 2). After the tunnels were created, each knee was tested in the ACL-deficient state.

The three ACL reconstructions were performed in random order. For each knee, all three reconstructions used the same hamstring graft (Fig. 3). We secured the graft with a post screw and spiked washer on both the tibial and femoral sides. The graft was fixed at 15° degrees of knee flexion (measured with a manual goniometer), according to the senior author's (F.H.F.'s) protocol for single-bundle ACL reconstruction. This involved 40 N of tension, applied with use of a manual tensiometer (Smith & Nephew). This tension was based on previous studies of ACL single-bundle reconstruction^{19,20}. After each reconstruction, the knees were biomechanically tested using the robotic system and underwent MRI with the graft in place to measure graft inclination⁹. A final CT scan was obtained to illustrate the position of the femoral tunnels in a three-dimensional (3-D) image. Mimics software (Materialise) was used to create 3-D

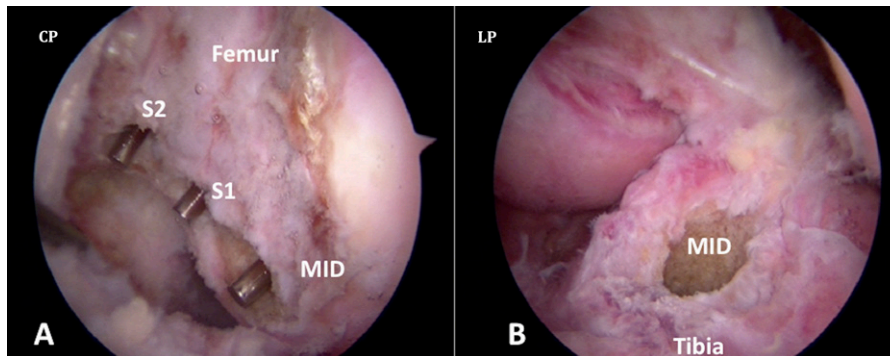


Fig. 2

Figs. 2-A and 2-B The femoral and tibial tunnels. **Fig. 2-A** The Mid, S1, and S2 femoral tunnels, with a 2-mm distance between them. **Fig. 2-B** The tibial tunnel in the center of the tibial footprint (Mid position). CP = central portal, and LP = lateral portal.

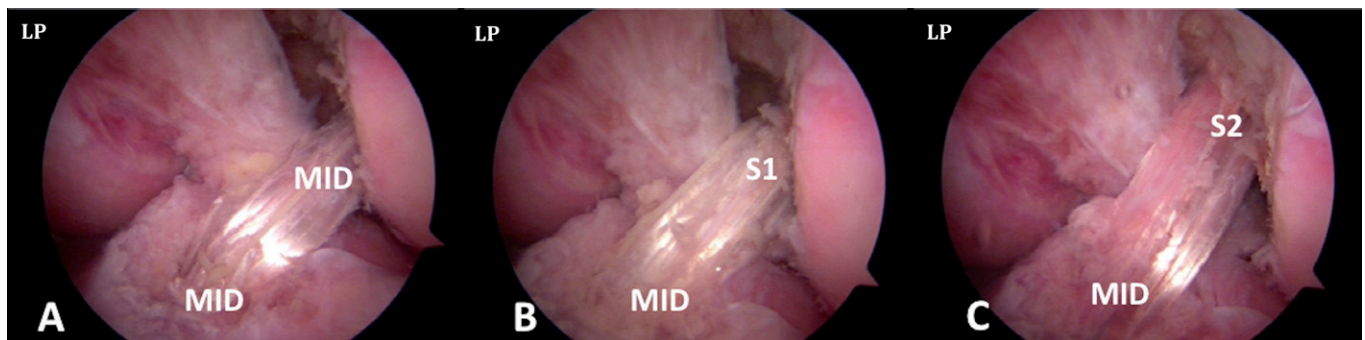


Fig. 3

Figs. 3-A, 3-B, and 3-C The three ACL reconstructions with increasing vertical graft positioning. **Fig. 3-A** The center of the tibial insertion site (Mid) to the center of the femoral insertion site (Mid). **Fig. 3-B** Tibial Mid to femoral S1. **Fig. 3-C** Tibial Mid to femoral S2. LP = lateral portal.

TABLE III In Situ Force (N) in the Native ACL and Graft During Anterior Tibial Loading by Knee Flexion Angle*

	0°	15°	30°	45°	60°	90°
Intact native ACL	77.9 ± 11.1	82.8 ± 8.7	75.3 ± 9.6	65.2 ± 13.5	54.8 ± 14.4	53.3 ± 13.4
Mid reconstruction	78.6 ± 6.9	78.3 ± 10.1†	63.7 ± 15.0‡	44.1 ± 18.6§	31.2 ± 19.9§	25.9 ± 14.6§
S1 reconstruction	59.6 ± 13.3§	71.3 ± 14.1§	62.1 ± 17.2§	49.3 ± 19.5§	39.5 ± 19.9‡	39.9 ± 19.5‡
S2 reconstruction	47.1 ± 16.8§	61.7 ± 18.9‡	56.8 ± 21.4‡	48.9 ± 19.8‡	41.0 ± 23.4‡	48.9 ± 20.5

*The values are given as the mean and the standard deviation. †Significantly different from intact native ACL at $p < 0.05$. ‡Significantly different from intact native ACL at $p < 0.01$. §Significantly different from intact native ACL at $p < 0.001$.

reconstructions to verify the tunnel position and the increasingly vertical location on the lateral wall of the intercondylar notch (Fig. 4).

In Situ Force

After each ACL reconstruction, external loads were applied to the reconstructed knee, and the motion was measured. After removal of the graft, the motion was replayed to determine the in situ force experienced by the graft. By the principle of superposition, the change in the force before versus after graft removal, with the knee in the same position, represents the in situ force in the graft¹¹.

Data Analysis

Data analysis began with the calculation of descriptive statistics, including frequency counts and percentages for frequency variables, and measures of central tendency (means and medians) and dispersion (standard deviation and interquartile range) for continuous variables. Separate general linear models (GLMs) were created with a single within-subjects factor (with five levels: intact ACL, transected ACL, Mid reconstruction, S1 reconstruction, and S2 reconstruction) to detect differences in the in situ force and inclination angle between the native ACL, transected ACL, and each femoral tunnel placement. To determine if the in situ

force for each reconstruction was significantly different from that of the intact ACL, planned pairwise contrasts were performed using paired t tests to compare the amount of force. The level of significance for all statistical tests was set at $p < 0.05$.

Source of Funding

This study was supported by a grant from the Albert B. Ferguson, MD Orthopaedic Fund of the Pittsburgh Foundation and received financial project support from the University of Pittsburgh Medical Center, Department of Orthopaedic Surgery. The funding sources did not play a role in the investigation.

Results

The mean (and standard deviation) of the inclination angle for the native ACL was $51.7^\circ \pm 5.0^\circ$. The graft inclination angle increased significantly in comparison with the native ACL for the S1 ($58.7^\circ \pm 5.4^\circ$; $p < 0.001$) and S2 ($64.7^\circ \pm 6.5^\circ$; $p < 0.001$) reconstructions. However, there was no significant difference in inclination angle between the native ACL and Mid reconstruction ($51.6^\circ \pm 4.1^\circ$; $p = 0.85$).

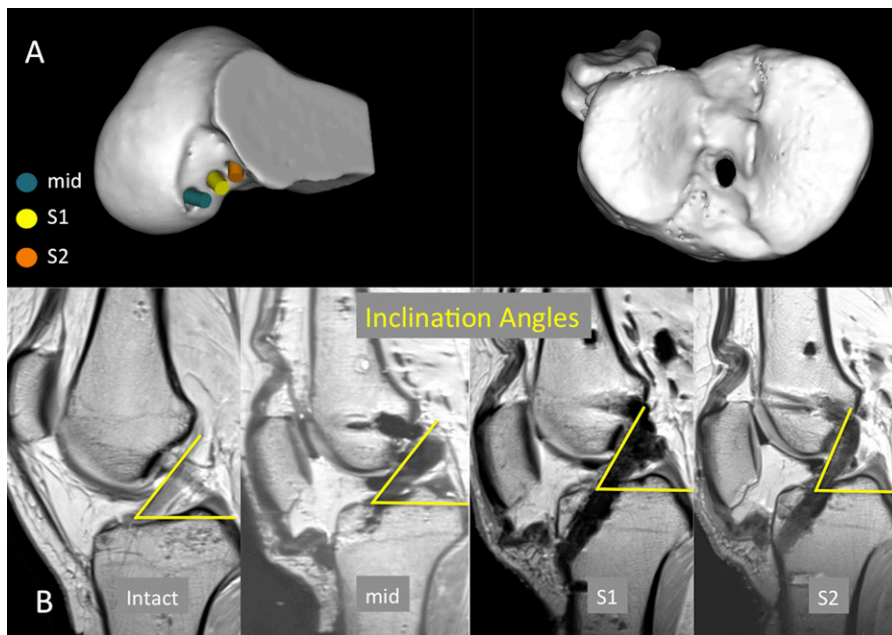


Fig. 4

Figs. 4-A and 4-B Femoral tunnel placement. **Fig. 4-A** 3-D CT scan confirming the femoral tunnel in the Mid (anatomic), S1, and S2 positions, which were increasingly vertical. The tibial tunnel (right panel) was in the center of the anatomic insertion site. **Fig. 4-B** The inclination angle of the native ACL and of each of the reconstructions in a typical specimen, attesting to increasingly vertical positioning of the graft.

TABLE IV In Situ Force (N) in the Native ACL and Graft During Simulated Pivot Shift by Knee Flexion Angle*

	0°	15°	30°
Intact native ACL	37.1 ± 7.3	48.5 ± 13.4	44.5 ± 23.3
Mid reconstruction	43.4 ± 8.4†	47.0 ± 12.2	36.4 ± 17.1
S1 reconstruction	27.4 ± 12.5	28.5 ± 19.1‡	20.8 ± 11.4‡
S2 reconstruction	19.8 ± 7.9§	18.9 ± 10.0§	14.8 ± 7.3§

*The values are presented as the mean and the standard deviation. †Significantly different from intact native ACL at $p < 0.05$. ‡Significantly different from intact native ACL at $p < 0.01$. §Significantly different from intact native ACL at $p < 0.001$.

The anterior tibial translation during anterior tibial loading and simulated pivot-shift loading are given in Table I and Table II, respectively.

The in situ force in the native ACL and graft for each reconstruction at 0°, 15°, 30°, 45°, 60°, and 90° of flexion during anterior tibial loading are given in Table III and for the simulated pivot-shift loading at 0°, 15°, and 30° of flexion in Table IV.

Discussion

We found that, for knee flexion of $\leq 30^\circ$, lower positioning of the graft, represented by the Mid reconstruction, was associated with in situ graft force that was not significantly different from that in the native ACL, specifically under anterior tibial loading at 0° of knee flexion, and at 15° and 30° of knee flexion during the simulated pivot shift. In addition, the Mid reconstruction better restored the intact ACL knee anterior laxity at lower flexion angles, while the vertical reconstructions better restored the laxity at higher flexion angles.

Changing the graft location on the femur from the anatomic (Mid) position to the more vertical (S1) and even more vertical (S2) positions led to an increase in the graft inclination angle and a decrease in graft in situ forces during the simulated pivot-shift test. The Mid position better restored the knee laxity under simulated pivot-shift loading.

These results indicate that, compared with nonanatomically placed grafts (S1 and S2), an anatomic graft (Mid) may be at higher risk for failure when the knee is positioned at $\leq 30^\circ$ of flexion, which includes the range where most ACL injuries occur²¹.

At $\geq 45^\circ$ of knee flexion, higher tunnel position led to increasingly higher in situ graft force, closer to the loads in the native ACL. Kato et al.²² found that the vertical position of the femoral tunnel in the so-called “PL (posterolateral) to high AM” graft position produced greater in situ force compared with a lower graft (mid-tibial insertion to mid-femoral insertion) reconstruction at $>30^\circ$ of knee flexion. Sakane et al. found that the AM bundle has higher in situ force at larger angles of knee flexion, while the PL bundle has higher in situ force at lower angles of knee flexion¹¹. A possible explanation for the present findings is that the S1 and S2 femoral tunnels were more vertical and more representative of the AM bundle position. However, despite the higher in situ force experienced by the more vertical

grafts (the S1 and S2 reconstructions) during anterior tibial loading at $\geq 45^\circ$ of flexion, the graft may not be at correspondingly greater risk for injury, because the ACL is rarely injured with the knee in this position²¹. We found that knee anterior laxity was related to the graft in situ force, with a greater force being found in knees with lower laxity.

Sim et al. studied native ACL and ACL graft in situ force and kinematics for ACL reconstructions performed by drilling the femoral tunnel using the AM portal or transtibial technique or a two-incision outside-in approach²⁰. Anatomic ACL reconstruction was achieved only when the femoral tunnel was created using the AM portal or outside-in approaches. They found no differences between the intact ACL and the ACL graft in situ force for any of the reconstruction methods during anterior tibial loading. Those results differ from those observed in the current study; no significant differences were found between the native ACL and the anatomically placed ACL graft in situ force under anterior tibial loading at 0° of knee flexion, but at the remaining angles of knee flexion, we found significant differences between the native ACL versus the anatomic (Mid) reconstruction and native ACL versus the nonanatomic (S1 and S2) reconstructions. Under a simulated pivot-shift load, Sim et al. found significant differences between the native ACL and only the transtibial approach at 0° of knee flexion and between the native ACL and all of the approaches—transtibial, outside-in, and AM portal—at 30° of flexion. Their study found that the graft in situ force was always lower than the native ACL in situ force, but significantly so only in the cases mentioned above. Similarly, our study found that, for simulated pivot-shift loading at 0° of knee flexion, the S2 reconstruction had a lower in situ force than the intact ACL and that, at 30° of knee flexion, the force for all reconstructions was lower than that for the intact ACL, but significantly so only for S1 and S2. On the basis of the limited data that can be compared between the two studies (i.e., at 0° to 30° of knee flexion), in general, the simulated pivot-shift loads produced higher in situ graft force at low knee flexion angles ($\leq 15^\circ$) when the tunnels were placed in an anatomic position compared with nonanatomic placement.

ACL reconstruction has transitioned toward methods of “anatomic” reconstruction over the last decade. However, no changes have been made to the rehabilitation and return-to-sports guidelines, to account for the increased in situ force that has been observed with anatomic placement of the graft. van

Eck et al. reported failure rates of up to 13% for anatomic ACL reconstructions, either single or double bundle, using allografts in patients under twenty-five years old³. The peak time for graft failure was between six and nine months postoperatively, which is the most commonly recommended time period for return to sports. Although objective parameters for return to sports (e.g., muscle strength and neuromuscular control) may have been met during this time frame, complete graft healing and maturation may take longer to occur^{23,24}. Similarly, the Danish Knee Ligament Reconstruction Register showed a cumulative revision rate at four years of 5.2% when an AM portal approach was used to drill the femoral tunnel—an approach that is expected to provide a more anatomic placement and, therefore, a lower inclination angle—compared with a 3.2% revision rate for the transtibial technique⁶. The higher force experienced by the more anatomically placed grafts could be a possible explanation for these findings.

We acknowledge that the nonanatomic ACL reconstructions performed in this study (S1 and S2) do not correspond to traditional transtibial reconstruction, because the tibial tunnel was positioned in the center of the tibial footprint rather than in the PL insertion site, as is typically done during transtibial reconstruction. However, the inclination angles that resulted from the S1 and S2 reconstructions were similar to what is frequently seen in nonanatomic reconstructions in a clinical situation. Illingworth et al.⁹ showed that the average sagittal inclination angle for nonanatomic reconstructions was $62.3^\circ \pm 7.8^\circ$, and specifically for transtibial reconstructions, it was $63.5^\circ \pm 7.2^\circ$. In the current study, the inclination angle for the S1 and S2 reconstructions was $58.7^\circ \pm 5.4^\circ$ and $64.7^\circ \pm 6.5^\circ$, respectively.

Considerable variability was observed in the current study data. Relatively large standard deviations can occur in the measurements of in situ tissue force²⁰ in both the intact ACL and reconstructed specimens at certain flexion angles, but we found no specific pattern. It is assumed that the variation was due to natural variations in knee osseous and soft-tissue morphology rather than to any methodological variations.

Our study considered two distinct loading conditions: anterior tibial loading, replicating a commonly used clinical test; and simulated pivot-shift test, so as to attempt to replicate the most common mechanism of ACL tear. The study had the limitation of the robotic loads being applied quasi-statically

to the knee, and moreover, without muscle forces. While reasonably simulating KT-1000 clinical testing, the study's anterior tibial loading regime may not be representative of dynamic physiologic loads. In addition, there was variability in the passive motion path of each specimen and, therefore, variation in force and anterior translation results. Another limitation was that the same hamstring autograft was used for the three reconstructions in each cadaveric specimen, which may have affected graft behavior. Although the effects of the repeated graft use are unknown, the loads placed on the graft were relatively low. To minimize possible bias in the results, the order in which each reconstruction was made was randomized.

In conclusion, our study demonstrated that the anatomic (Mid) ACL reconstruction resulted in a lower graft inclination angle than that of nonanatomic ACL reconstruction; the Mid inclination angle was closer to the native ACL inclination angle. The anatomic (Mid) ACL reconstruction led to graft force and knee anterior laxity closer to those of the native knee for both anterior tibial load and simulated pivot-shift load at $\leq 30^\circ$ of knee flexion. Finally, at $\leq 30^\circ$ of knee flexion, the in situ ACL graft force decreased as the inclination angle increased, which we attribute to locating the femoral tunnel at a higher position on the lateral wall of the intercondylar notch. ■

Paulo H. Araujo, MD
SHIS QL 8 Conj 2 Casa 19,
Lago Sul Brasília - DF, Brazil 71620-225

Shigehiro Asai, MD
Mauricio Pinto, MD
Thiago Protta, MD
Kellie Middleton, MD
Monica Linde-Rosen, BSME
James Irrgang, PT, PhD
Patrick Smolinski, PhD
Freddie H. Fu, MD
Department of Orthopaedic Surgery,
University of Pittsburgh,
Kaufmann Building, Suite 1011,
3471 Fifth Avenue,
Pittsburgh, PA 15213.
E-mail address for F. Fu: ffu@upmc.edu

References

- Kato Y, Ingham SJM, Kramer S, Smolinski P, Saito A, Fu FH. Effect of tunnel position for anatomic single-bundle ACL reconstruction on knee biomechanics in a porcine model. *Knee Surg Sports Traumatol Arthrosc.* 2010 Jan;18(1):2-10.
- Hussein M, van Eck CF, Cretnik A, Dinevski D, Fu FH. Prospective randomized clinical evaluation of conventional single-bundle, anatomic single-bundle, and anatomic double-bundle anterior cruciate ligament reconstruction: 281 cases with 3- to 5-year follow-up. *Am J Sports Med.* 2012 Mar;40(3):512-20. Epub 2011 Nov 15.
- van Eck CF, Schkrohwsky JG, Working ZM, Irrgang JJ, Fu FH. Prospective analysis of failure rate and predictors of failure after anatomic anterior cruciate ligament reconstruction with allograft. *Am J Sports Med.* 2012 Apr;40(4):800-7. Epub 2012 Jan 11.
- Snow M, Campbell G, Adlington J, Stanish WD. Two to five year results of primary ACL reconstruction using doubled tibialis anterior allograft. *Knee Surg Sports Traumatol Arthrosc.* 2010 Oct;18(10):1374-8. Epub 2009 Dec 03.
- Salmon L, Russell V, Musgrove T, Pinczewski L, Refshauge K. Incidence and risk factors for graft rupture and contralateral rupture after anterior cruciate ligament reconstruction. *Arthroscopy.* 2005 Aug;21(8):948-57.
- Rahr-Wagner L, Thillemann TM, Pedersen AB, Lind MC. Increased risk of revision after anteromedial compared with transtibial drilling of the femoral tunnel during primary anterior cruciate ligament reconstruction: results from the Danish Knee Ligament Reconstruction Register. *Arthroscopy.* 2013 Jan;29(1):98-105.
- Jackson DW, Grood ES, Goldstein JD, Rosen MA, Kurzweil PR, Cummings JF, Simon TM. A comparison of patellar tendon autograft and allograft used for anterior cruciate ligament reconstruction in the goat model. *Am J Sports Med.* 1993 Mar-Apr;21(2):176-85.
- van Eck CF, Schreiber VM, Mejia HA, Samuelsson K, van Dijk CN, Karlsson J, Fu FH. "Anatomic" anterior cruciate ligament reconstruction: a systematic review of surgical techniques and reporting of surgical data. *Arthroscopy.* 2010 Sep;26(9)(Suppl):S2-12.

- 9.** Illingworth KD, Hensler D, Working ZM, Macalena JA, Tashman S, Fu FH. A simple evaluation of anterior cruciate ligament femoral tunnel position: the inclination angle and femoral tunnel angle. *Am J Sports Med.* 2011 Dec;39(12):2611-8. Epub 2011 Sep 09.
- 10.** Fujie H, Livesay GA, Fujita M, Woo SL. Forces and moments in six-DOF at the human knee joint: mathematical description for control. *J Biomech.* 1996 Dec;29(12):1577-85.
- 11.** Sakane M, Fox RJ, Woo SL, Livesay GA, Li G, Fu FH. In situ forces in the anterior cruciate ligament and its bundles in response to anterior tibial loads. *J Orthop Res.* 1997 Mar;15(2):285-93.
- 12.** Zantop T, Herbert M, Raschke MJ, Fu FH, Petersen W. The role of the antero-medial and posterolateral bundles of the anterior cruciate ligament in anterior tibial translation and internal rotation. *Am J Sports Med.* 2007 Feb;35(2):223-7. Epub 2006 Dec 07.
- 13.** Ejerhed L, Kartus J, Sernert N, Köhler K, Karlsson J. Patellar tendon or semi-tendinosus tendon autografts for anterior cruciate ligament reconstruction? A prospective randomized study with a two-year follow-up. *Am J Sports Med.* 2003 Jan-Feb;31(1):19-25.
- 14.** Oster DM, Grood ES, Feder SM, Butler DL, Levy MS. Primary and coupled motions in the intact and the ACL-deficient knee: an in vitro study in the goat model. *J Orthop Res.* 1992 Jul;10(4):476-84.
- 15.** Kanamori A, Zeminski J, Rudy TW, Li G, Fu FH, Woo SLY. The effect of axial tibial torque on the function of the anterior cruciate ligament: a biomechanical study of a simulated pivot shift test. *Arthroscopy.* 2002 Apr;18(4):394-8.
- 16.** Xu Y, Liu J, Kramer S, Martins C, Kato Y, Linde-Rosen M, Smolinski P, Fu FH. Comparison of in situ forces and knee kinematics in anteromedial and high anteromedial bundle augmentation for partially ruptured anterior cruciate ligament. *Am J Sports Med.* 2011 Feb;39(2):272-8. Epub 2010 Dec 04.
- 17.** Kondo E, Merican AM, Yasuda K, Amis AA. Biomechanical comparisons of knee stability after anterior cruciate ligament reconstruction between 2 clinically available transtibial procedures: anatomic double bundle versus single bundle. *Am J Sports Med.* 2010 Jul;38(7):1349-58. Epub 2010 Apr 27.
- 18.** Araujo PH, van Eck CF, Macalena JA, Fu FH. Advances in the three-portal technique for anatomical single- or double-bundle ACL reconstruction. *Knee Surg Sports Traumatol Arthrosc.* 2011 Aug;19(8):1239-42. Epub 2011 Feb 11.
- 19.** Amis AA, Jakob RP. Anterior cruciate ligament graft positioning, tensioning and twisting. *Knee Surg Sports Traumatol Arthrosc.* 1998;6(Suppl 1):S2-12.
- 20.** Sim JA, Gadikota HR, Li JS, Li G, Gill TJ. Biomechanical evaluation of knee joint laxities and graft forces after anterior cruciate ligament reconstruction by antero-medial portal, outside-in, and transtibial techniques. *Am J Sports Med.* 2011 Dec;39(12):2604-10. Epub 2011 Sep 09.
- 21.** Koga H, Nakamae A, Shima Y, Iwasa J, Myklebust G, Engebretsen L, Bahr R, Krosshaug T. Mechanisms for noncontact anterior cruciate ligament injuries: knee joint kinematics in 10 injury situations from female team handball and basketball. *Am J Sports Med.* 2010 Nov;38(11):2218-25. Epub 2010 Jul 01.
- 22.** Kato Y, Maeyama A, Lertwanich P, Wang JH, Ingham SJ, Kramer S, Martins CQ, Smolinski P, Fu FH. Biomechanical comparison of different graft positions for single-bundle anterior cruciate ligament reconstruction. *Knee Surg Sports Traumatol Arthrosc.* 2013 Apr;21(4):816-23. Epub 2012 Mar 15.
- 23.** Arnoczky SP, Tarvin GB, Marshall JL. Anterior cruciate ligament replacement using patellar tendon. An evaluation of graft revascularization in the dog. *J Bone Joint Surg Am.* 1982 Feb;64(2):217-24.
- 24.** Radice F, Yáñez R, Gutiérrez V, Rosales J, Pinedo M, Coda S. Comparison of magnetic resonance imaging findings in anterior cruciate ligament grafts with and without autologous platelet-derived growth factors. *Arthroscopy.* 2010 Jan;26(1):50-7.